

**Anti-POLR3H Antibody**  
**Rabbit polyclonal antibody to POLR3H**  
**Catalog # AP60685****Specification**

---

**Anti-POLR3H Antibody - Product Information**

Application	WB, IHC
Primary Accession	<a href="#">O9Y535</a>
Other Accession	<a href="#">O9D2C6</a>
Reactivity	Human, Mouse, Rat, Monkey, Bovine
Host	Rabbit
Clonality	Polyclonal
Calculated MW	22918

**Anti-POLR3H Antibody - Additional Information****Gene ID** 171568**Other Names**

KIAA1665; RPC8; DNA-directed RNA polymerase III subunit RPC8; RNA polymerase III subunit C8; DNA-directed RNA polymerase III subunit H; RNA polymerase III subunit 22.9 kDa subunit; RPC22.9

**Target/Specificity**

Recognizes endogenous levels of POLR3H protein.

**Dilution**WB~~WB (1/500 - 1/1000), IH (1/100 - 1/200)  
IHC~~1:100~500**Format**

Liquid in 0.42% Potassium phosphate, 0.87% Sodium chloride, pH 7.3, 30% glycerol, and 0.09% (W/V) sodium azide.

**Storage**

Store at -20 °C. Stable for 12 months from date of receipt

**Anti-POLR3H Antibody - Protein Information****Name** POLR3H ([HGNC:30349](#))**Synonyms** KIAA1665, RPC8**Function**

DNA-dependent RNA polymerase catalyzes the transcription of DNA into RNA using the four ribonucleoside triphosphates as substrates (PubMed:&lt;a href="http://www.uniprot.org/citations/20413673" target="\_blank"&gt;20413673&lt;/a&gt;, PubMed:&lt;a href="http://www.uniprot.org/citations/33558764" target="\_blank"&gt;33558764&lt;/a&gt;, PubMed:&lt;a href="http://www.uniprot.org/citations/34675218" target="\_blank"&gt;34675218&lt;/a&gt;). Specific

peripheric component of RNA polymerase III (Pol III) which synthesizes small non-coding RNAs including 5S rRNA, snRNAs, tRNAs and miRNAs from at least 500 distinct genomic loci. With CRCP/RPC9 forms a mobile stalk that protrudes from Pol III core and functions primarily in transcription initiation (By similarity) (PubMed:<a href="http://www.uniprot.org/citations/33558764" target="\_blank">33558764</a>, PubMed:<a href="http://www.uniprot.org/citations/34675218" target="\_blank">34675218</a>). Pol III plays a key role in sensing and limiting infection by intracellular bacteria and DNA viruses. Acts as nuclear and cytosolic DNA sensor involved in innate immune response. Can sense non-self dsDNA that serves as template for transcription into dsRNA. The non-self RNA polymerase III transcripts, such as Epstein-Barr virus-encoded RNAs (EBERs) induce type I interferon and NF-kappa-B through the RIG-I pathway (PubMed:<a href="http://www.uniprot.org/citations/19609254" target="\_blank">19609254</a>, PubMed:<a href="http://www.uniprot.org/citations/19631370" target="\_blank">19631370</a>).

### Cellular Location

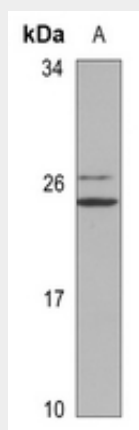
Nucleus.

### Anti-POLR3H Antibody - Protocols

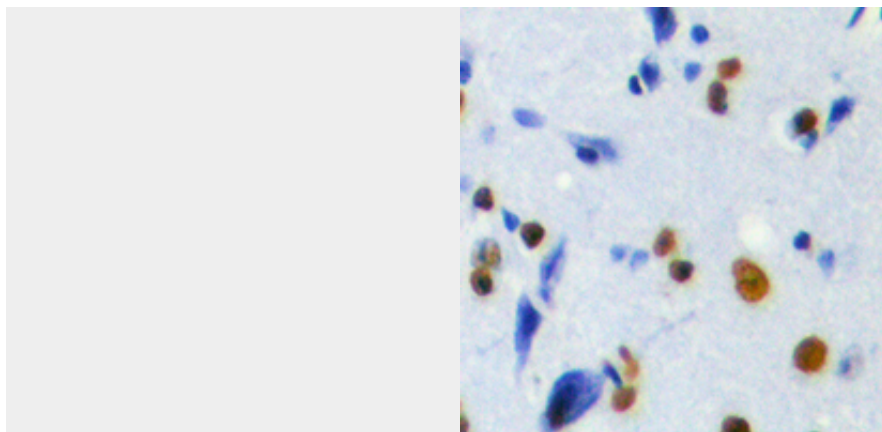
Provided below are standard protocols that you may find useful for product applications.

- [Western Blot](#)
- [Blocking Peptides](#)
- [Dot Blot](#)
- [Immunohistochemistry](#)
- [Immunofluorescence](#)
- [Immunoprecipitation](#)
- [Flow Cytometry](#)
- [Cell Culture](#)

### Anti-POLR3H Antibody - Images



Western blot analysis of POLR3H expression in mouse liver (A) whole cell lysates.



Immunohistochemical analysis of POLR3H staining in human brain formalin fixed paraffin embedded tissue section. The section was pre-treated using heat mediated antigen retrieval with sodium citrate buffer (pH 6.0). The section was then incubated with the antibody at room temperature and detected using an HRP conjugated compact polymer system. DAB was used as the chromogen. The section was then counterstained with haematoxylin and mounted with DPX.

#### **Anti-POLR3H Antibody - Background**

KLH-conjugated synthetic peptide encompassing a sequence within the C-term region of human POLR3H. The exact sequence is proprietary.